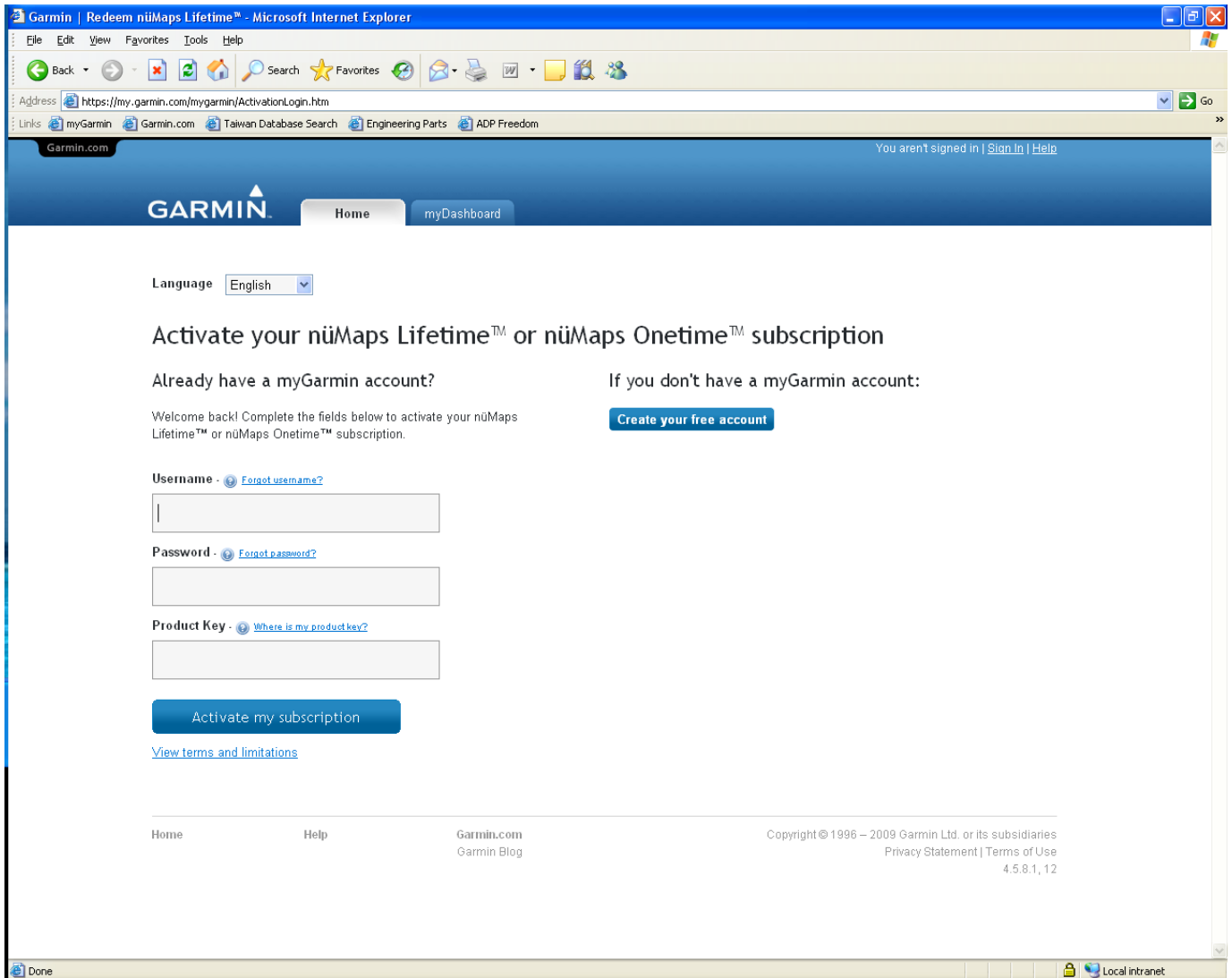


## How to activate your LMU card and download the Map update

You must first go to this link [www.garmin.com/activatenumaps](http://www.garmin.com/activatenumaps) and enter your Garmin account details including the product key found at the bottom left of the LMU card.



The screenshot shows a Microsoft Internet Explorer browser window displaying the Garmin website. The address bar shows the URL: <https://my.garmin.com/mygarmin/ActivationLogin.htm>. The page header includes the Garmin logo and navigation links for Home and myDashboard. A language dropdown menu is set to English. The main heading is "Activate your nüMaps Lifetime™ or nüMaps Onetime™ subscription". Below this, there are two columns of text. The left column is for users who already have a myGarmin account, and the right column is for users who do not. The right column includes a "Create your free account" button. The form fields include Username, Password, and Product Key, each with a "Forgot" link. An "Activate my subscription" button is located below the form fields. A link for "View terms and limitations" is also present. The footer contains navigation links for Home and Help, the Garmin.com and Garmin Blog, and copyright information for 1996-2009.

Garmin | Redeem nüMaps Lifetime™ - Microsoft Internet Explorer

File Edit View Favorites Tools Help

Address: <https://my.garmin.com/mygarmin/ActivationLogin.htm>

Links: myGarmin, Garmin.com, Taiwan Database Search, Engineering Parts, ADP Freedom

Garmin.com You aren't signed in | [Sign In](#) | [Help](#)

**GARMIN** Home myDashboard

Language: English

### Activate your nüMaps Lifetime™ or nüMaps Onetime™ subscription

**Already have a myGarmin account?**

Welcome back! Complete the fields below to activate your nüMaps Lifetime™ or nüMaps Onetime™ subscription.

**Username** - [Forgot username?](#)

**Password** - [Forgot password?](#)

**Product Key** - [Where is my product key?](#)

[Activate my subscription](#)

[View terms and limitations](#)

---

Home Help Garmin.com Garmin Blog Copyright © 1996 – 2009 Garmin Ltd. or its subsidiaries Privacy Statement | Terms of Use 4.5.8.1, 12

Done Local intranet

Then follow the instructions below

## How to Activate and download your Map Update (20 Steps)

1, Please connect your Garmin to the computer. You should use the cable supplied in the box or a cable you may already have. The fitment of the cable is fairly standard and you may have one already that would fit. If you use a non-garmin-branded cable then please make sure you get the "Mass Storage mode" screen. Alternatively you can order a USB cable from our website ([www.garmin.co.uk/shop](http://www.garmin.co.uk/shop)) part number: 010-10723-01, suggested retail price: £ 4.99.



Then you must log into <https://my.garmin.com/mygarmin/customers/myGarminHome.faces>

myGarmin™ - Microsoft Internet Explorer

File Edit View Favorites Tools Help

Back Forward Stop Home Search Favorites

Address <https://my.garmin.com/mygarmin/customers/myGarminHome.faces> Go

Links myGarmin Garmin.com Taiwan Database Search Engineering Parts ADP Freedom

Garmin.com You aren't signed in | [Sign In](#) | [Help](#)

**GARMIN** Home myDashboard

Language English

### myDashboard: Map Updates

✔ See if map updates are available and know before you go.

Where To? View

Hands Free Vol

GARMIN nüvi

Welcome to myGarmin, your resource to

- [Register](#) your Garmin product
- Manage, unlock and download your [maps](#)
- Download [Garmin Mobile™ for BlackBerry®](#)
- Subscribe to [safety camera](#) information
- [Download](#) scenic routes, geocaches, games and more

Sign In

Username

Password

Sign In

[Create new account](#)

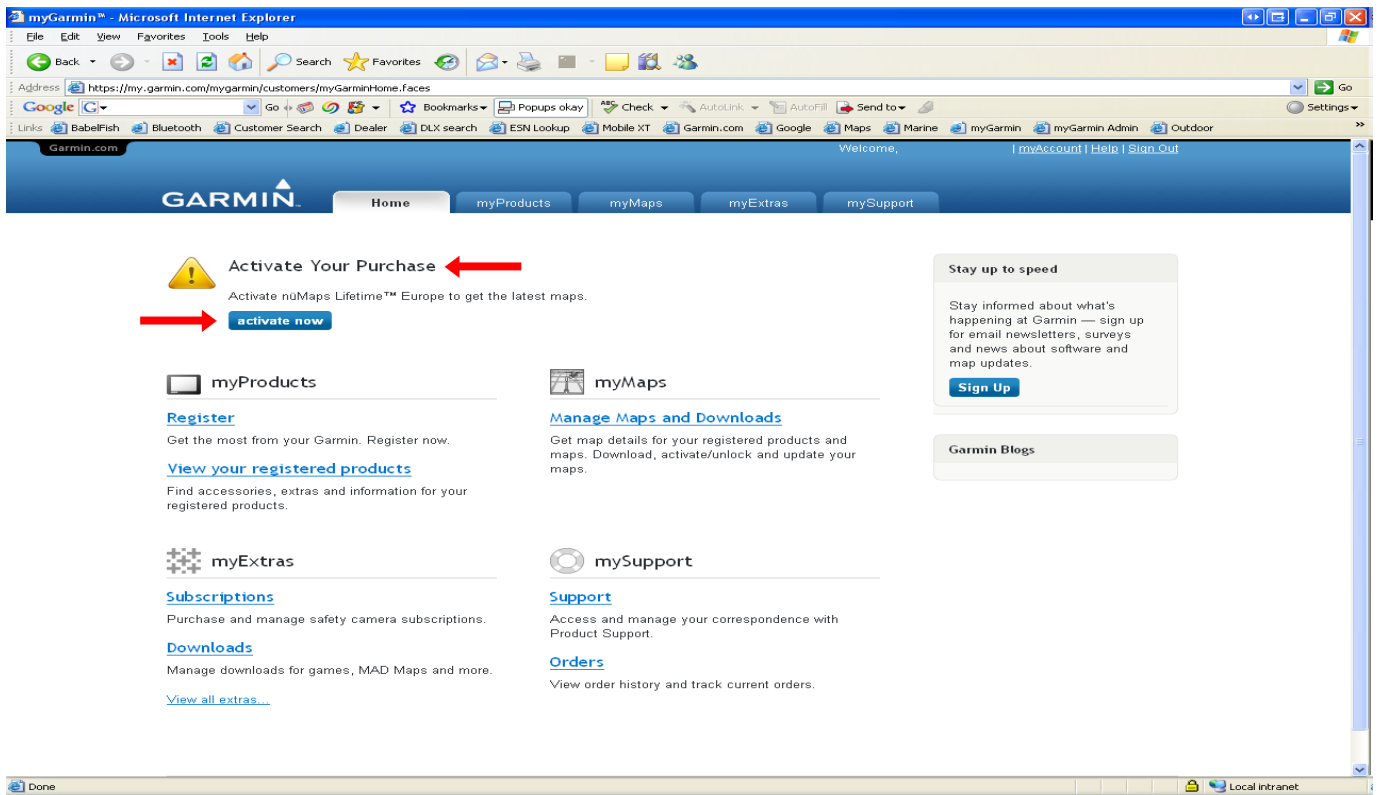
[Forgot password?](#) | [Forgot username?](#)

Home Help Garmin.com Garmin Blog

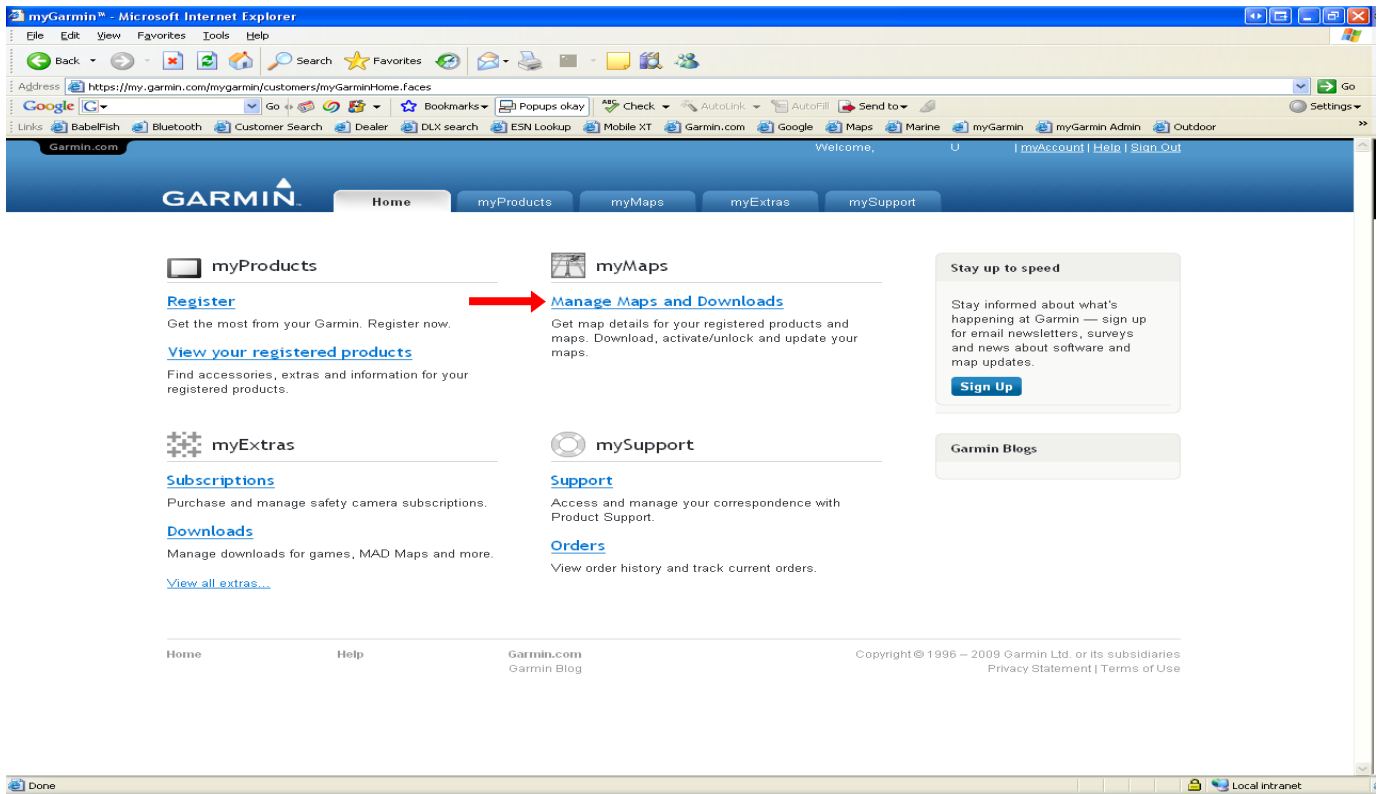
Copyright © 1996 – 2009 Garmin Ltd. or its subsidiaries  
Privacy Statement | Terms of Use  
4.5.8.1, 15

Done Local intranet

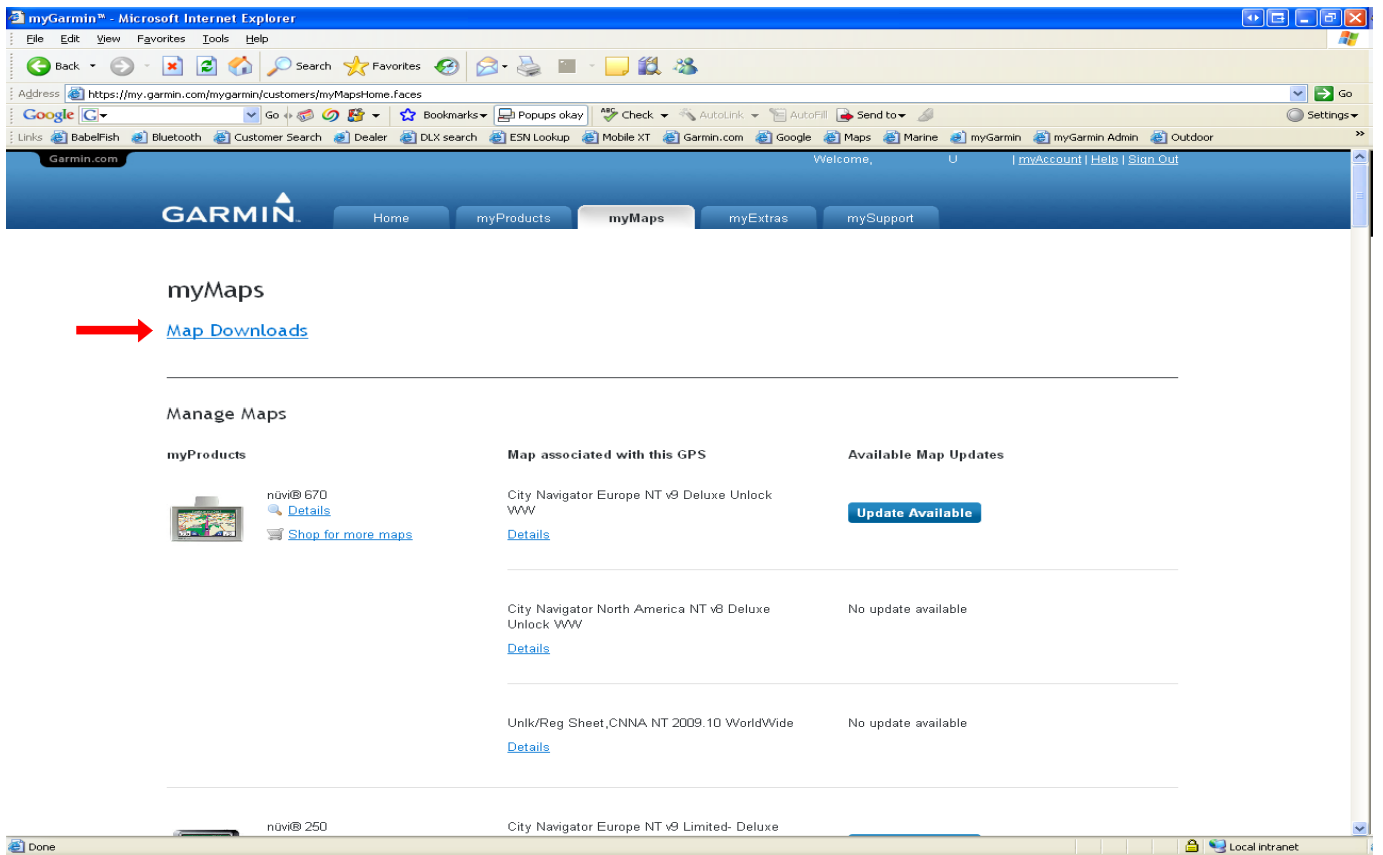
3, After a few seconds you should see the “Activate” link appear toward the top of the screen, once this has appeared click the “Activate Now” box to continue.



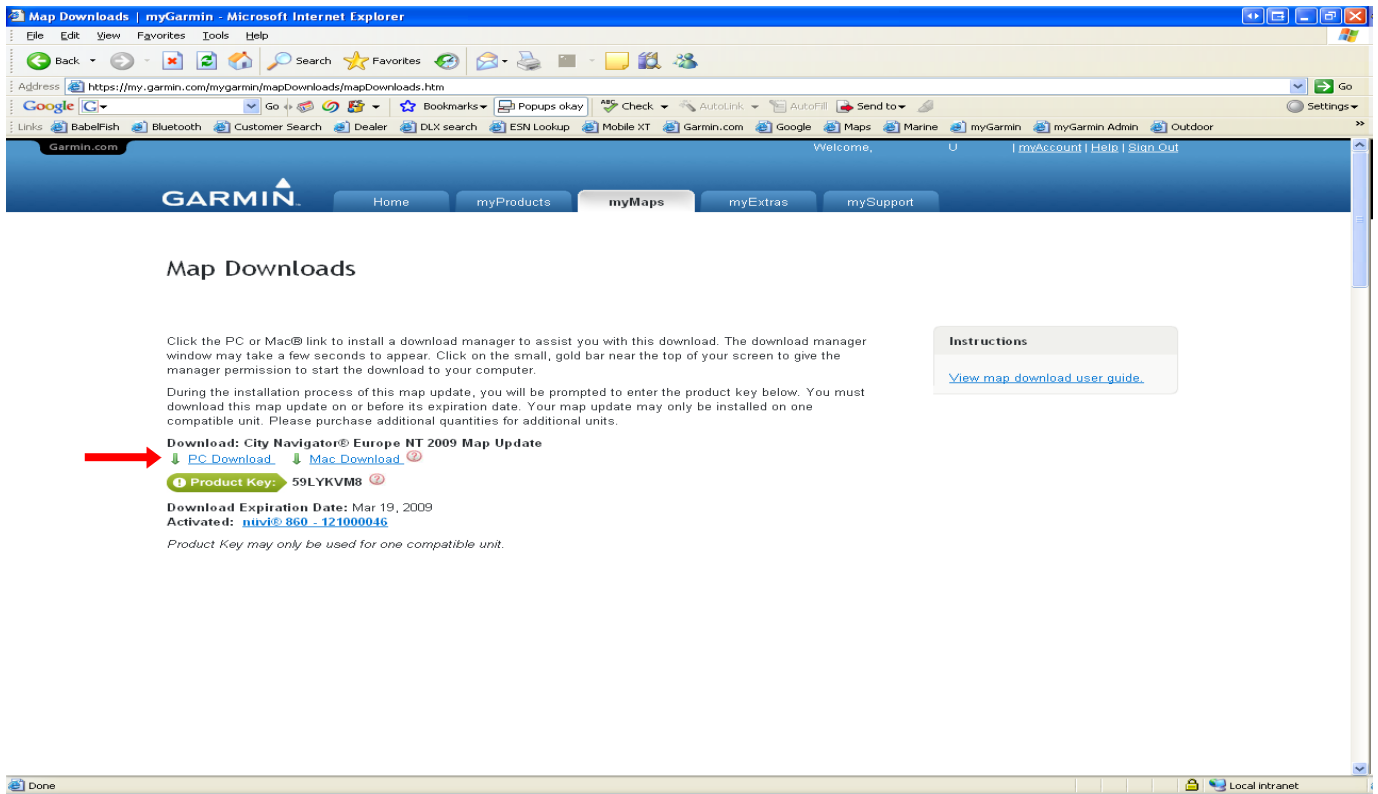
4, Click “Manage Maps And Downloads”.



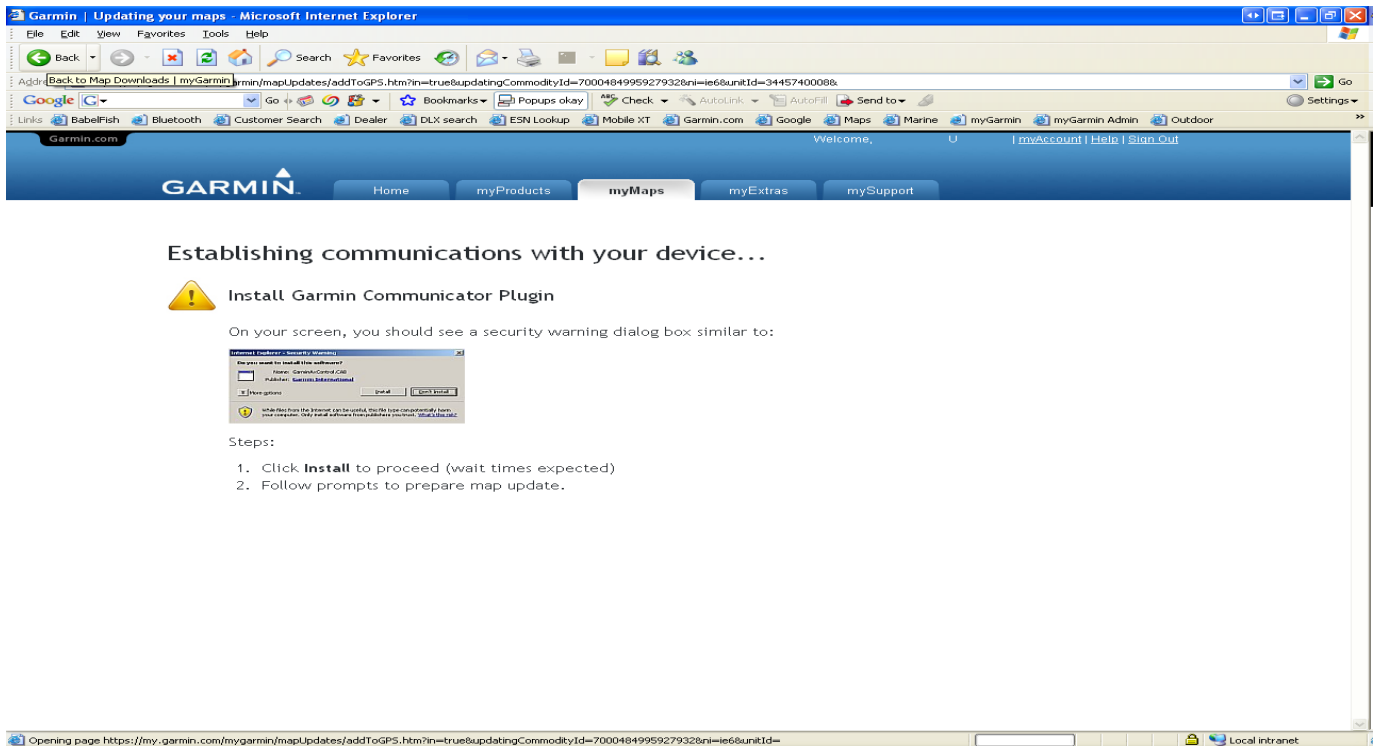
## 5, Click “Map Downloads”



## 6, Select either the “PC” or the “MAC” download (depending on your system).

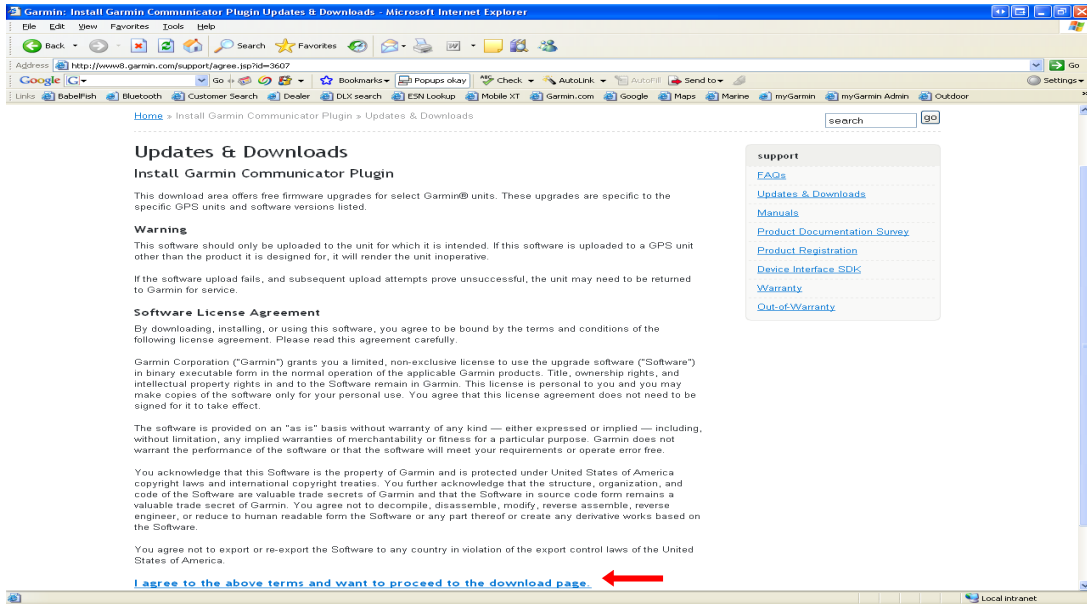


7, At this stage it will look for the “Communicator Plug-in” if this screen stays like this then please refer to point 6a onwards. If not forward to point 7.

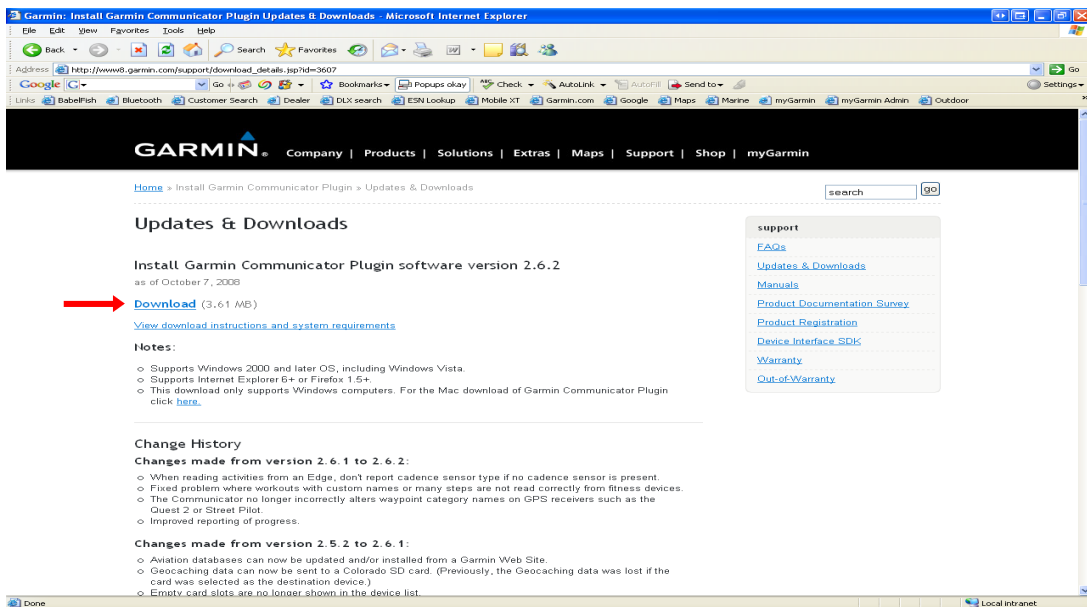


7a, Please download the "Garmin Communicator" program from <http://www8.garmin.com/products/communicator/>.

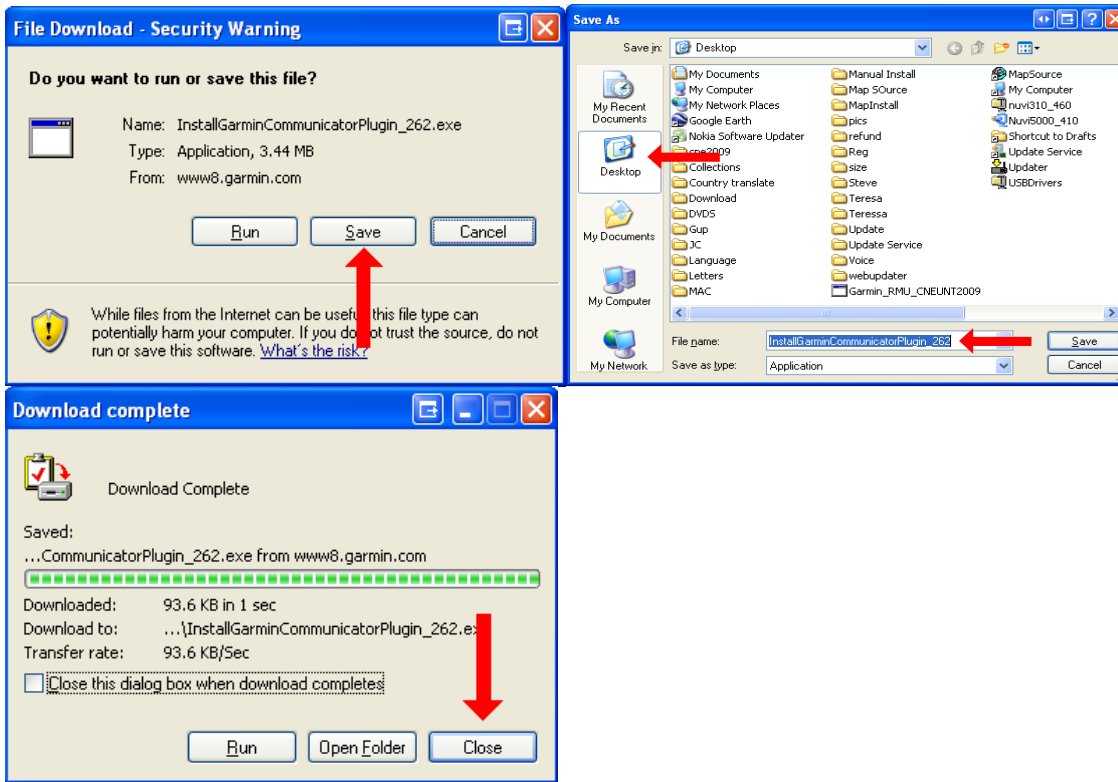
7a 1, Read the license agreement and if you agree the terms then Click “I Agree etc” (see below)



7a 2, Click “Download”.

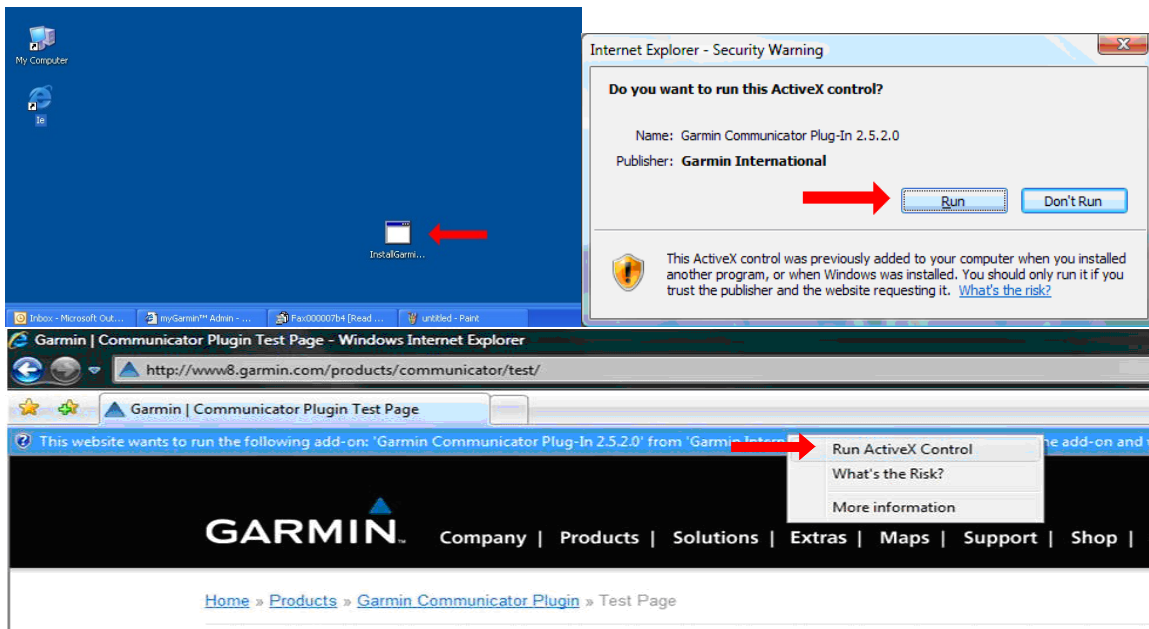


7a 3, I would advise you “Save” the file when asked to the desktop. Then “Close”.



7a 4, Close all windows connected to the Internet (i.e. anything connected to Google, Garmin, E-Bay, Amazon etc).

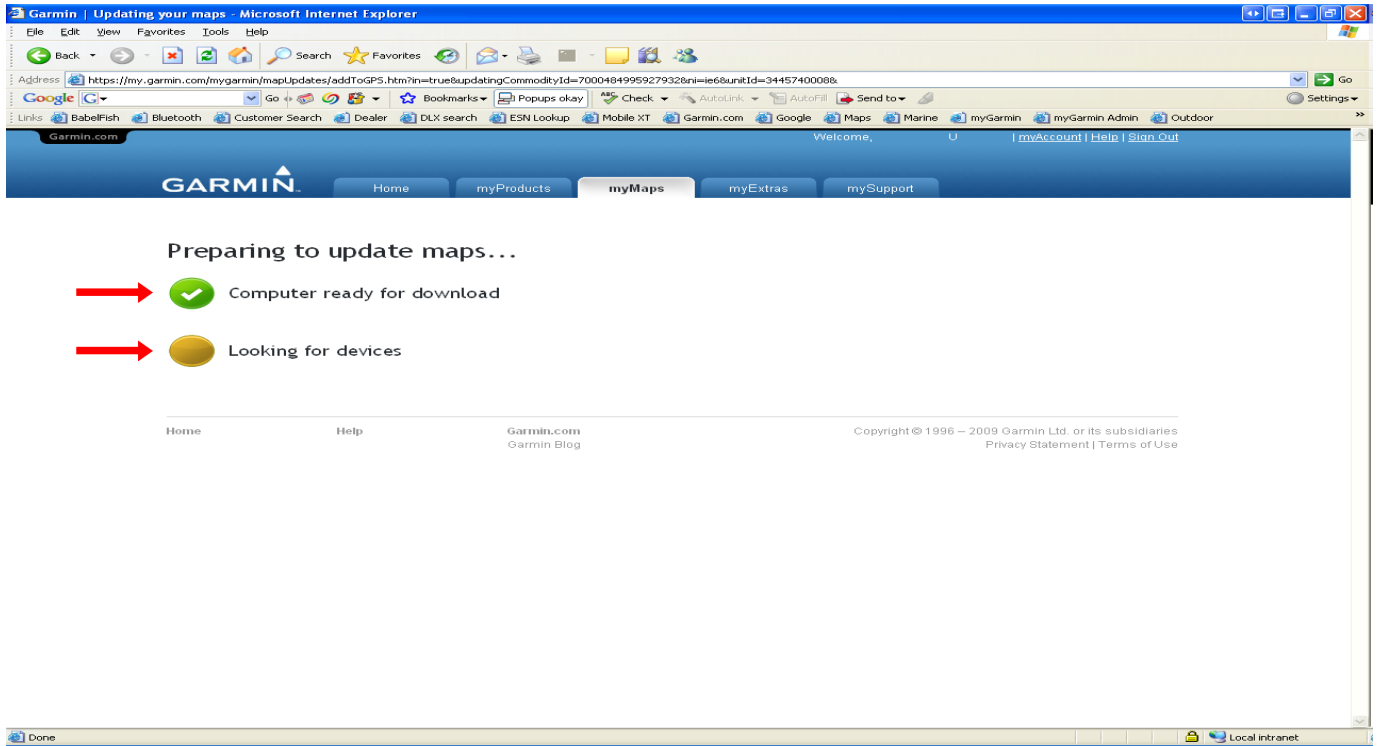
7a 5, Double click the Garmin icon on your desktop and follow the on-screen instructions, paying close attention to any “Active X” controls that may appear at the top of the web-page.



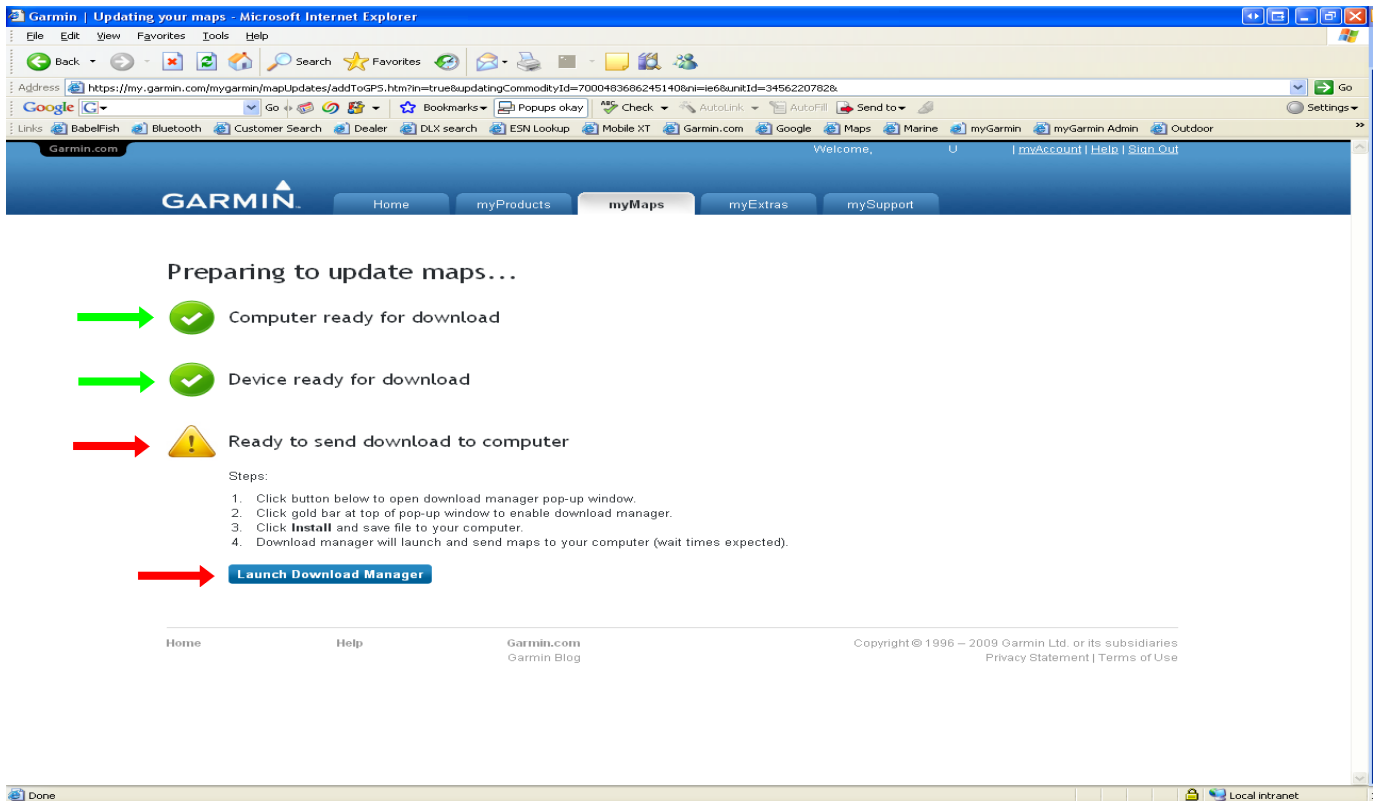
When this is complete please continue.



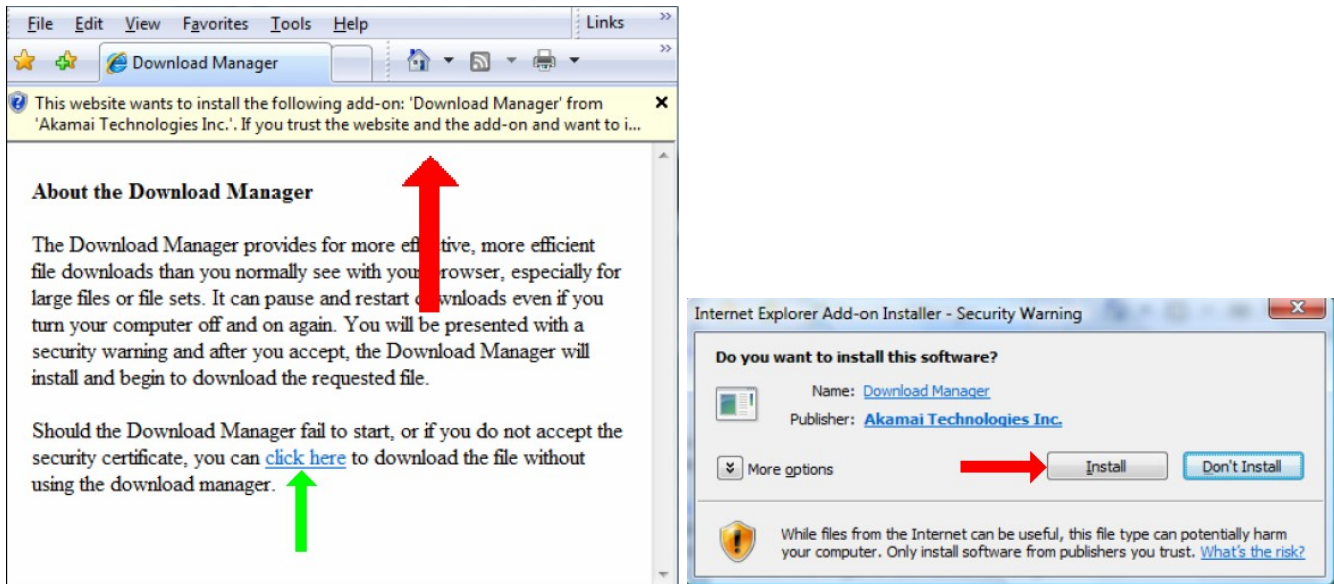
8, If the “Communicator Plug-in” is installed correctly the screen will indicate the computer is ready and will start looking for your device.



9, At this stage the computer is ready, has found your device and is ready to send the download to the computer. The next step is to “Launch Download Manager” (Red Arrows).

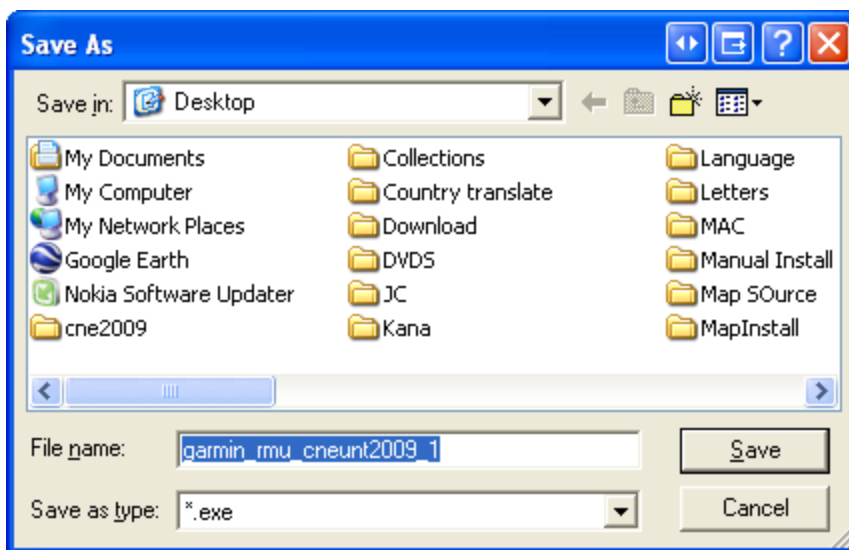


10, The box “About Download Manager” will appear here you may see at the top of the screen a prompt to install the “Akami Download Manager” or “Active X Controls” you need to agree and install these.



11, The option of where to “save” the file will now appear. I would suggest that you save the file to your “Desktop” or a place you can find it on your main hard drive (Usually labeled C:\). The download has to be saved to the main hard drive it will not run from any other drive.

If this doesn’t appear then please select “Click Here” which you will find in the window “About Download Manager” (See picture in point 9 (the Green arrow)).



12, You will see the message “Sending download to computer”. The download is 3GB in size, so it may take several hours to download to your machine, this speed is dependant on the speed of your broadband and the specification of your PC.

Garmin | Updating your maps - Microsoft Internet Explorer

Address <https://my.garmin.com/mygarmin/mapUpdates/addToGPS.htm?in=true&updatingCommodityId=7000493686245140&ni=ie6&unitId=3456220762&>

Garmin.com

Home myProducts **myMaps** myExtras mySupport

### Preparing to update maps...

- ✓ Computer ready for download
- ✓ Device ready for download
- Sending download to computer

The download manager is sending maps to your computer.

Next Steps:

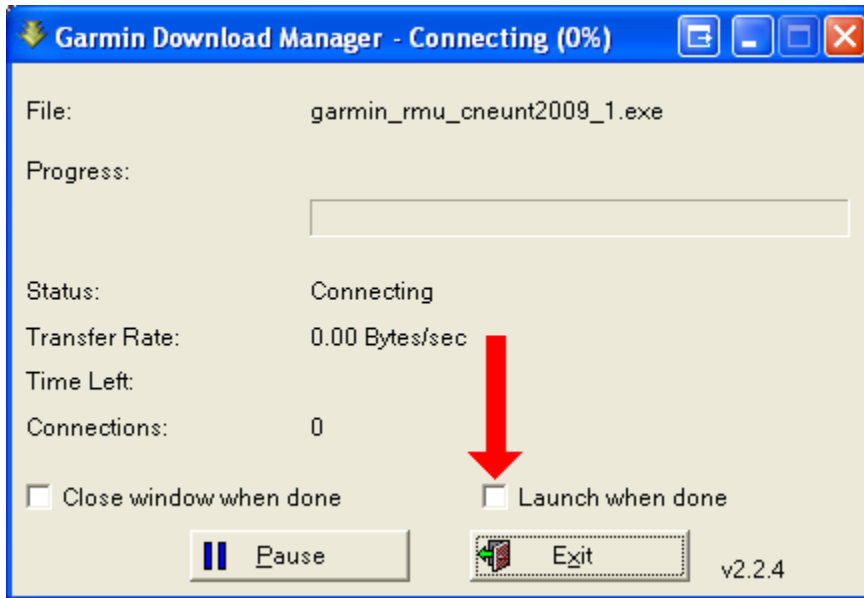
1. After download is complete, click **Launch** to extract map data to your computer.
2. Follow prompts to send the latest maps to your device. >> [view detailed instructions](#)

[Return to myGarmin home](#)

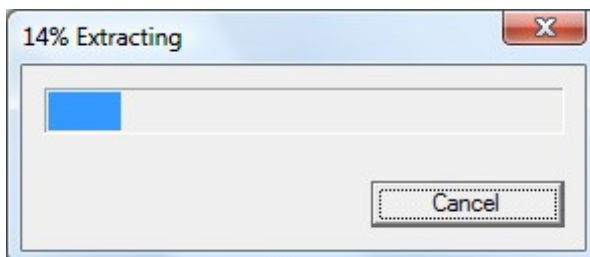
Home Help Garmin.com Garmin Blog Copyright © 1996 – 2009 Garmin Ltd. or its subsidiaries Privacy Statement | Terms of Use

Done Local intranet

The download manger will appear and give you a progress report about the download. I would suggest you put a tick in the box “Launch when Done”.

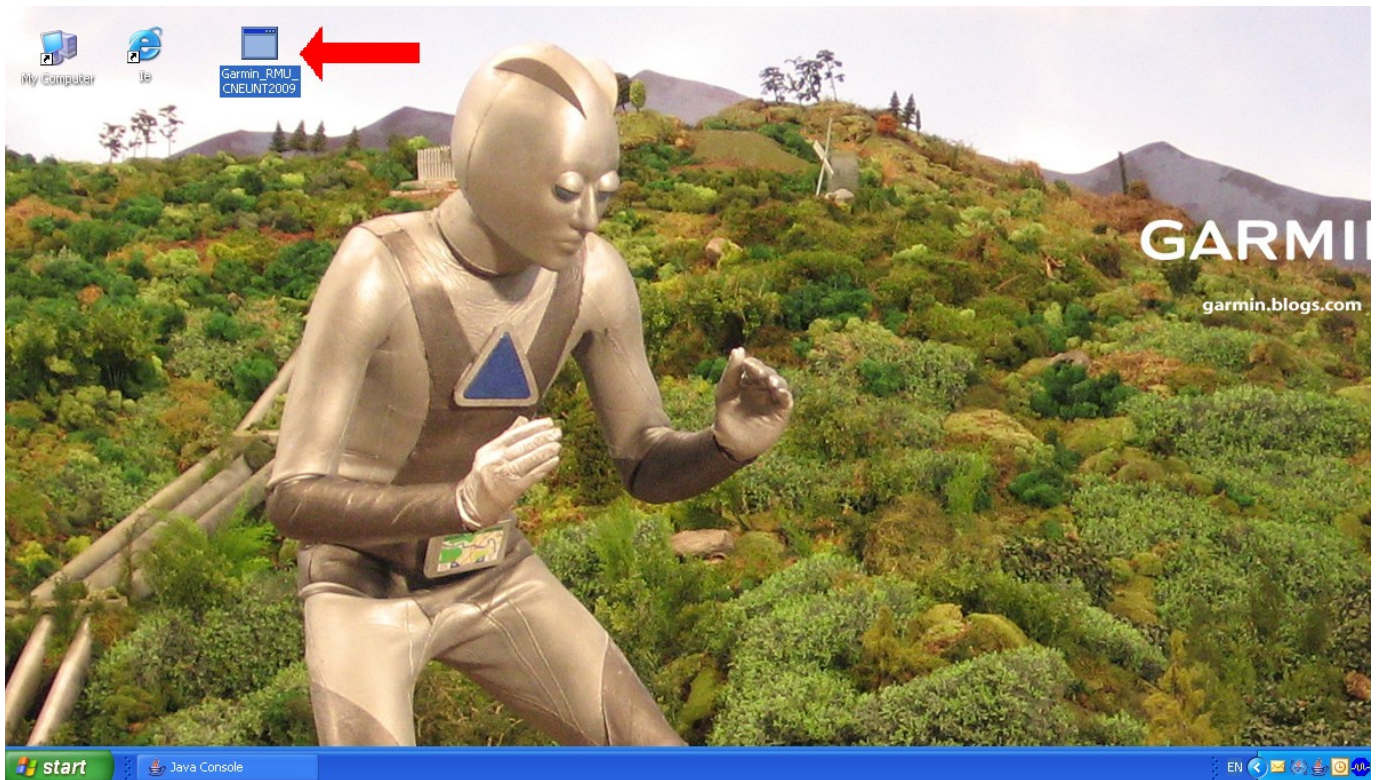


13, Once the download has finished it should start to extract. It can take up to 15 minutes for the “Extracting” box to appear (depending on the specification of your PC).



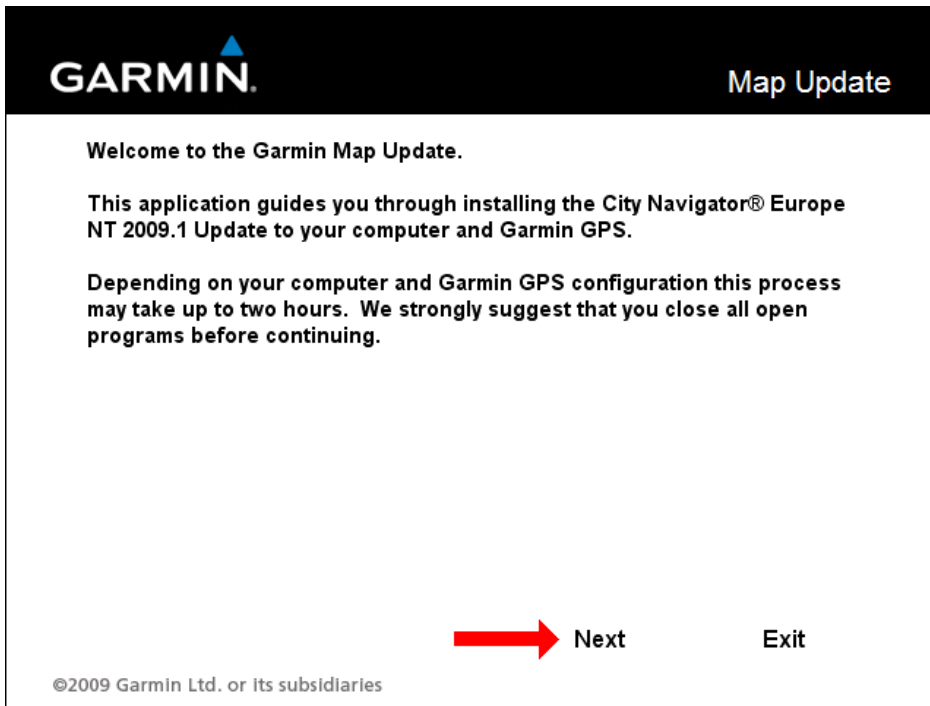
If this doesn't appear we need find and run the file "Garmin\_RMU\_CNEUNT2009.1". This will be located in the place specified or on the desktop (see below). To run the file you need to double click on it with the left-hand mouse button.

If you can't find the file you can search for the file manually by going into your “Start” menu then “Search” then enter in the search field Garmin\_RMU\_CNEUNT2009.1.



If it fails to extract please make sure you have 11GB of free space on your hard drive

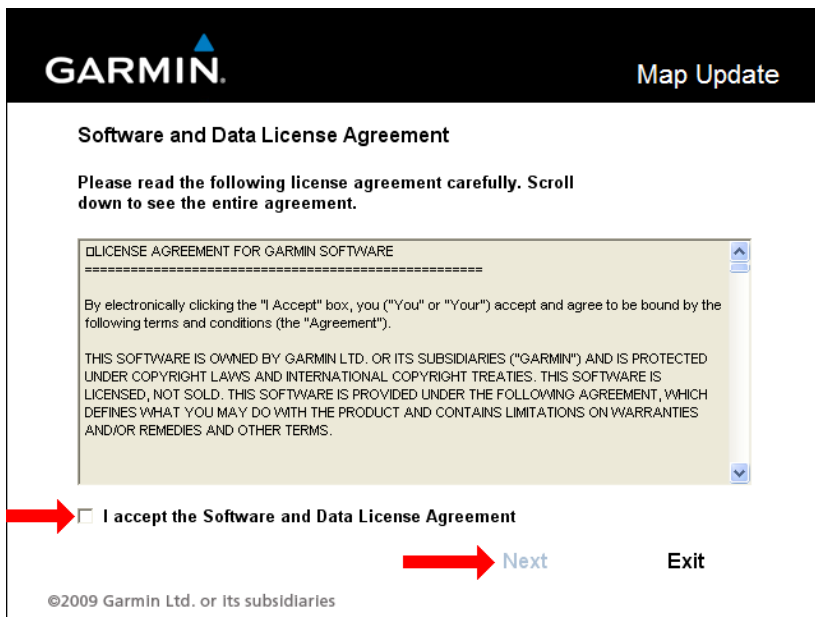
14, After the file has extracted you will see the installation program shown below. At the welcome screen click "next".



15, Please read this message carefully as it relates to a “Windows Security” message you may see from your computer screen at this stage, and click “Next”.

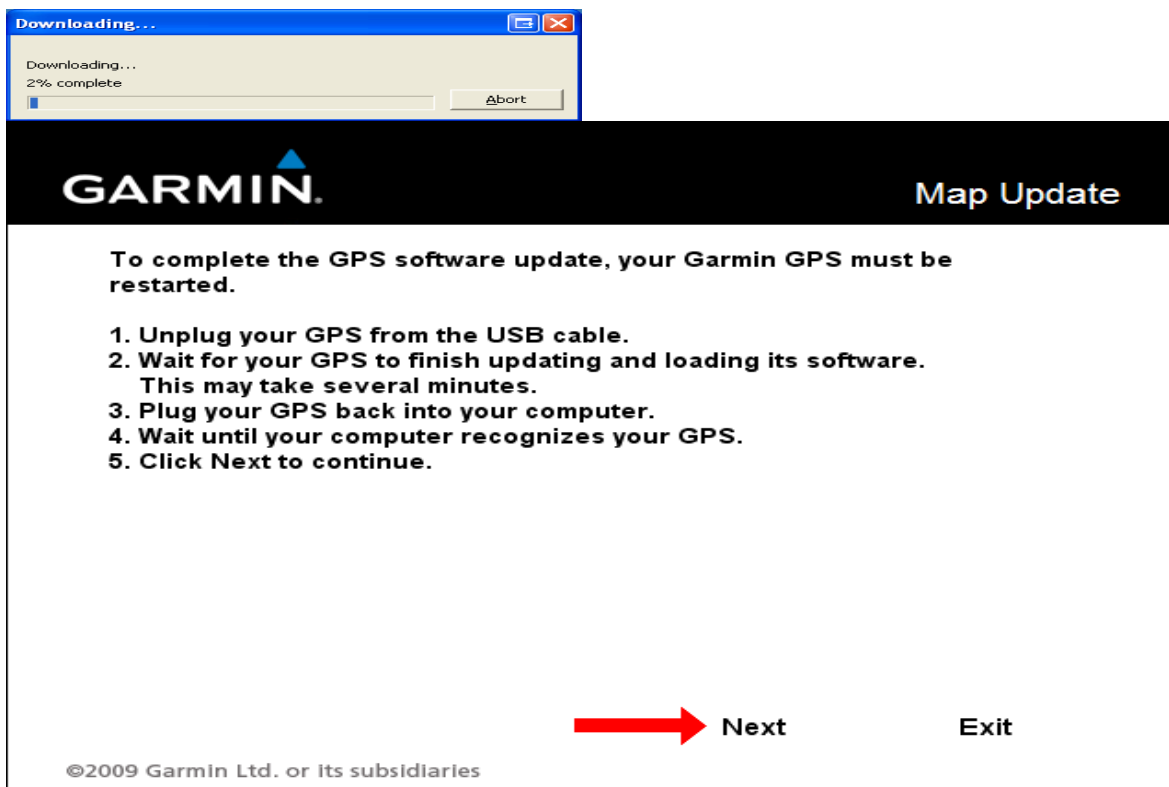


16, Read the license agreement and if you agree the terms then Click “I Agree etc” (see below) and then the “Next” button will highlight select this.

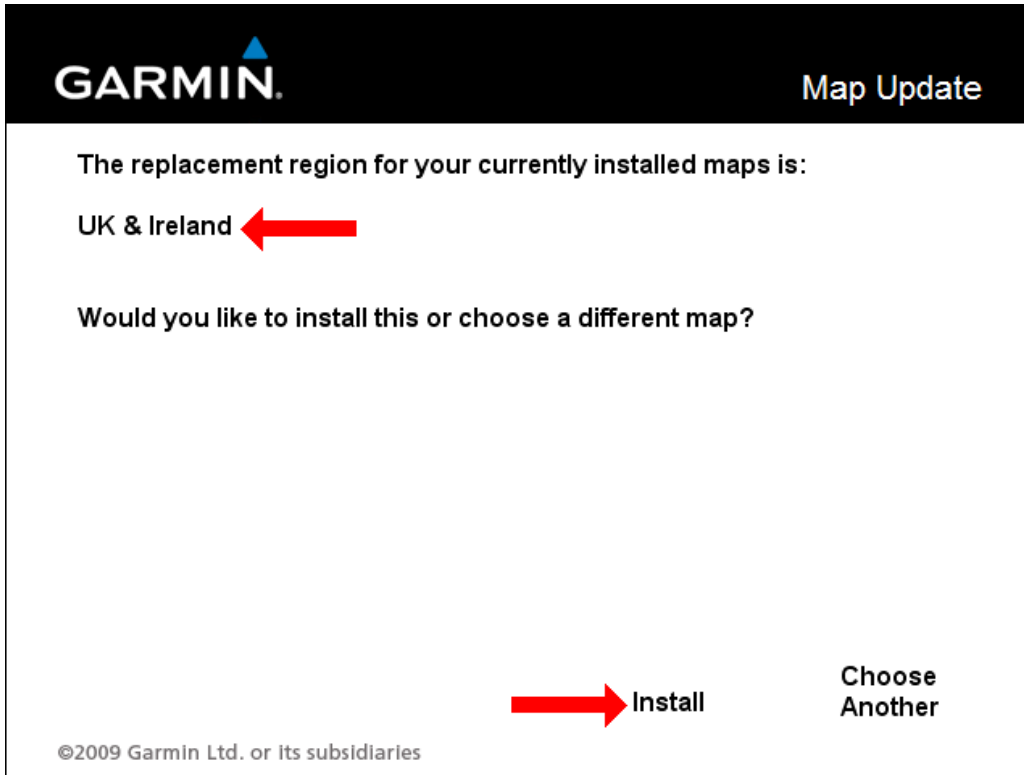


17, If you unit doesn't have the latest software installed on it the installation program will now send the latest software over to your unit. Once this has finished downloading it will ask to follow a few steps before the process can continue, once you have completed the steps as instructed click "next" (see below).

If you have the latest software already installed the program will skip to point 17



18, At this stage the program will suggest a region to install or you have the option of choosing another region. (Other regions will not be an option with full European models). Once you are happy with the selection select "Install".



19, The program will install the mapping now.



20, Once the program has finished installing the mapping you have completed the process.



Click "Finish" to exit.



## Map Update

**Congratulations! You successfully installed the new map data onto your Garmin GPS.**

**You may now disconnect and begin using your updated GPS.**

 **Finish**